

IPEDS DATA FEEDBACK

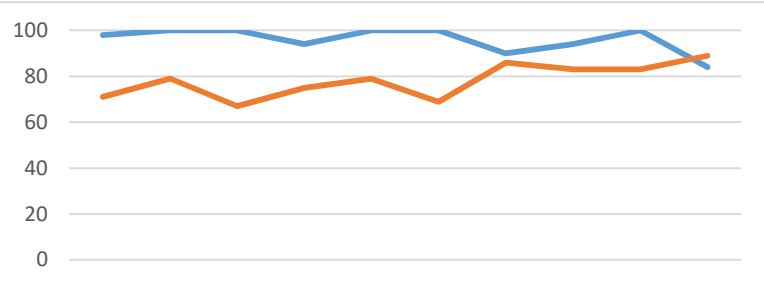
Percent of Entering Cohort Awarded Aid

Student Financial Aid Component: Percent of full-time, first-time degree/certificate-seeking undergraduate students who were awarded grant or scholarship aid, or loans, by type of aid

Academic Year	Report 2011	Report 2012	Report 2013	Report 2014	Report 2015	Report 2016	Report 2017	Report 2018	Report 2019	Report 2020
2009-10										
2010-11										
2011-12										
2012-13										
2013-14										
2014-15										
2015-16										
2016-17										
2017-18										
2018-19										

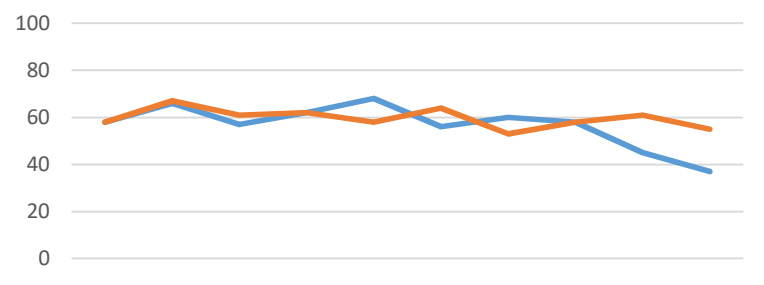
Percent Receiving Institutional Grants

BBC	98	100	100	94	100	100	90	94	100	84
Median	71	79	67	75	79	69	86	83	83	89



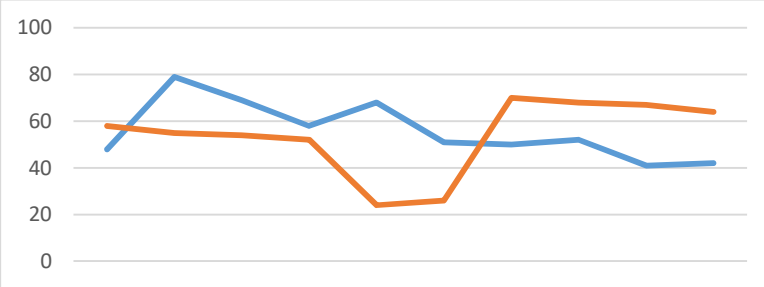
Percent Receiving Pell Grants

BBC	58	66	57	62	68	56	60	58	45	37
Median	58	67	61	62	58	64	53	58	61	55



Percent Receiving Federal Loans

BBC	48	79	69	58	68	51	50	52	41	42
Median	58	55	54	52	24	26	70	68	67	64

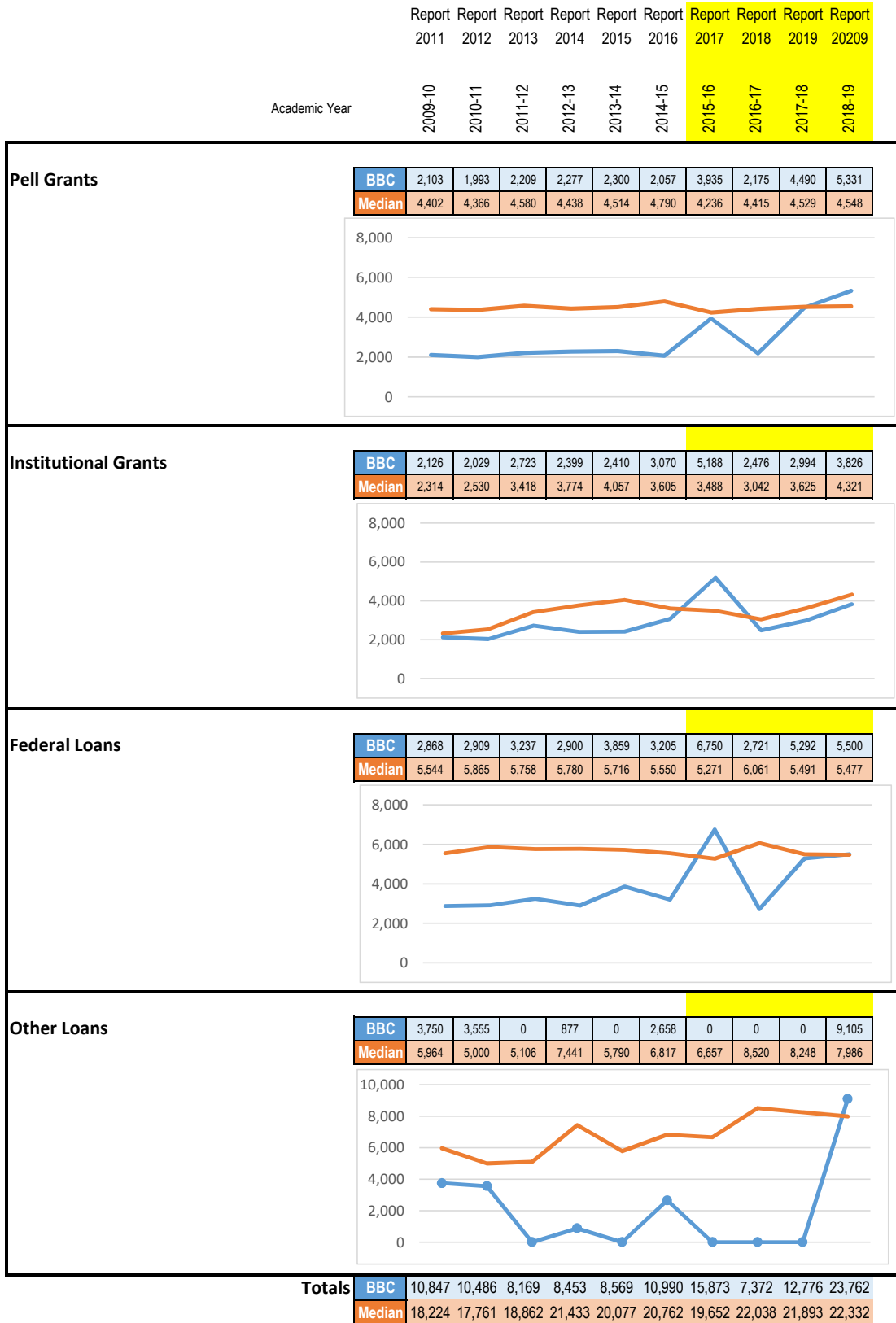


Comparison group is a cohort of faith-based institutions created by the IPEDS Data Feedback system. In 2017 we pared it to 35 Christian institutions (90% accredited the Association for Biblical Higher Education).

IPEDS DATA FEEDBACK

Amounts Awarded to Entering Cohort

Student Financial Aid Component: Average amounts of awarded grant or scholarship aid, or loans awarded to full-time, first-time degree/certificate-seeking undergraduate students, by type of aid



Comparison group is a cohort of faith-based institutions created by the IPEDS Data Feedback system. In 2017 we pared it to 35 Christian institutions (90% accredited the Association for Biblical Higher Education).